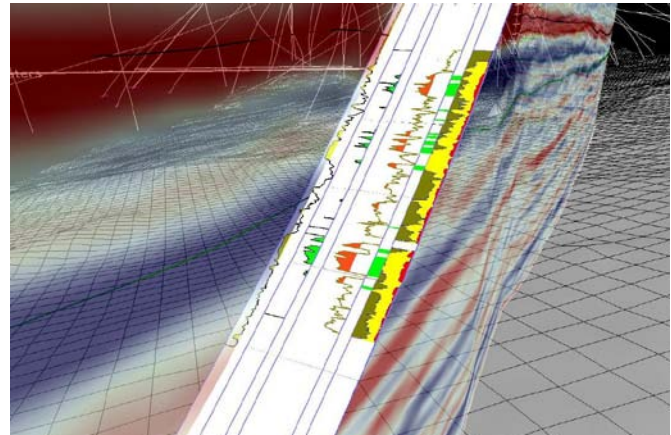




## AGM Launches RECON® 4.0

### RECON® 4.0 on Windows and 64 bit.

AGM is announcing the commercial launch of **RECON 4.0**, a major release that delivers a step-change in productivity for the fundamental geologic interpretation component of modern E&P workflows. RECON 4.0 empowers geologists to efficiently illuminate and test subsurface ideas with better interpretation tools, better data connectivity, and better large data management than ever before possible. With reservoirs becoming increasingly geologically complex and project timelines becoming tighter, RECON 4.0 helps geologists meet deadlines without compromising quality.



### Highlights include:

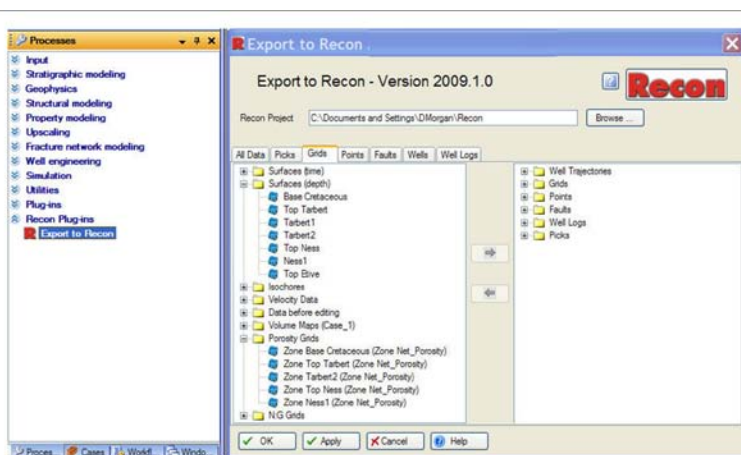
- Next generation Cascade Technology® mapping and correlation capabilities
- Version and scenario management for testing hypotheses and assessing risk
- Native Windows and Linux 32 and 64 bit support
- OpenSpirit-enabled, Landmark R5000 compliant, Petrel® Plug-in, and Data Mining tool
- Major ergonomic enhancements- context sensitive menus, reduced mouse clicks



OPENWORKS®



DEVELOPER NETWORK



### AGM RECON® 4.0 Interconnectivity with 3rd Party Applications

AGM places great importance on seamless integration with the various data stores commonly used by our customers. We have taken a multi-pronged approach to this challenging and ever-evolving task to provide integration with third-party vendors on various levels. The primary ways we interact with Landmark's OpenWorks®, Paradigm's suite, and Schlumberger's

Petrel are through direct links to applications, OpenSpirit® connectivity, and ASCII imports/exports. These links appear directly in the Recon® interface, in the interface of third-party vendors, and in our new ReConnect module.



## AGM 2010 AAPG Presentation Schedule

Date	Time	Presentation
Monday	10:00	<b>Realize Unprecedented Interpretation Speed Leveraging Cascade Technology®</b> – High level overview of core Recon functionality including new features. Hank Chambers & Perry Stokes, AGM
	12:00	<b>Improved Well Log Correlation Efficiency by Integrating Seismic</b> – Leveraging seismic StratalSlices with 2D and 3D log correlation for better geologic understanding. Hank Chambers & Perry Stokes, AGM
	3:00	<b>Reduce Interpretation Cycle Time During Horizontal Real Time Well Drilling</b> – Interpretation and reservoir prediction while drilling. Hank Chambers & Perry Stokes, AGM.
	4:30	<b>Realize Unprecedented Interpretation Speed Leveraging Cascade Technology</b> – High level overview of core Recon functionality including new features. Hank Chambers & Perry Stokes, AGM
Tuesday	10:00	<b>Realize Unprecedented Interpretation Speed Leveraging Cascade Technology</b> – High level overview of core Recon® functionality including new features. Hank Chambers & Perry Stokes, AGM
	12:00	<b>Improved Well Log Correlation Efficiency by Integrating Seismic</b> – Leveraging seismic StratalSlices with 2D and 3D log correlation for better geologic understanding. Hank Chambers & Perry Stokes, AGM
	3:00	<b>Reduce Interpretation Cycle Time During Horizontal Real Time Well Drilling</b> – Interpretation and reservoir prediction while drilling. Hank Chambers & Perry Stokes, AGM.
	4:30	<b>Realize Unprecedented Interpretation Speed Leveraging Cascade Technology®</b> – High level overview of core Recon® functionality including new features. Hank Chambers & Perry Stokes, AGM
Wednesday	10:00	<b>Imaging Stratigraphic Fill Architectures in Post-Rift Sediments, Offshore NW Africa</b> - StratalSlice presentation by Dallas Dunlap, Research Scientist, Bureau of Economic Geology, Austin, TX

Contact AGM:

[www.austingeo.com](http://www.austingeo.com)

[sales@austingeo.com](mailto:sales@austingeo.com)

+1 713 952 4141