

RECON NEWSLETTER

Volume 2, Issue 4

May 12, 2004

AGM

Special points of interest:

- Recon on Linux
- Interval Management
- AAPG 2004 retrospect

AGM ANNOUNCES RECON ON LINUX

AGM has announced the release of Recon™ for the Linux® operating system with general availability in the second quarter of 2004.

SUN, SGI, and IBM are working with AGM to provide a wide range of Linux solutions designed to demonstrate the power of AGM's flagship Recon product. Using the most cost-effective combination of both 32- and 64-bit CPUs with powerful new graphics technologies in Linux enables AGM to offer Recon solutions specifically tailored to its customers' needs and infrastructure requirements.



Recon on Linux 32 & 64-bit CPU architectures



Recon Platform Scalability

"The combination of low total cost of ownership with leading edge technology made Linux the logical next step in AGM's Recon development," said Tron Isaksen, AGM's President. "Recon's scalable design makes it easy for our design team to take advantage of the latest advancements in graphics and computing technology. Our clients leverage the time-savings obtained using Recon into more accurate interpretations critical to achieving business success in the E&P market."

Releasing Recon on Linux is part of AGM's strategy to provide its customers with next-generation 3-D geological interpretation software deployable on a wide range of computing hardware, from low-cost desktop workstations to large-scale immersive visualization centers.

Inside this issue:

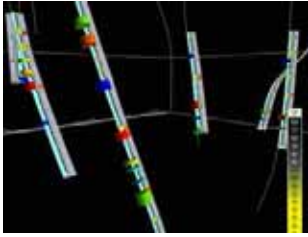
Interval Management	2-3
AAPG 2004 retrospect	4

RECON ON IBM A PRO INTELLISTATION

AGM is in the process of delivering Recon™ on the recently announced IBM A Pro IntelliStation, a Linux workstation based upon AMD's innovative new 64-bit CPU.



"Our cooperation with IBM has enabled us to offer the most cost-effective integrated 3-D geological interpretation system capable of meeting today's performance and dataset size needs," said Isaksen. "Recon on 64-bit Linux enables us to provide our clients with innovative new workflows resulting in productivity enhancements, more accurate interpretations, and improved success."

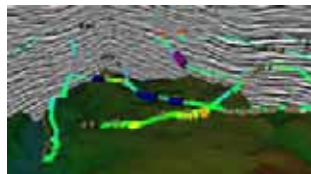


Gulf of Mexico oil production interval data colored by cumulative production values

Interval Management in Recon

Centralized Databases: advantages and drawbacks

Centralized database systems such as Landmark's OpenWorks have been invaluable in bringing order to the chaotic abundance of data managed by asset teams and interpreters.



Horizontal wells with production interval cylinders

Building a database project forces the user to address data related issues such as quality and relevance. Because data is obtained from a wide variety of sources, this is not a trivial task, often taking days to weeks to complete.

One of the drawbacks of centralized database systems is their inflexibility regarding the quick integration of certain geological



Recon Interval spreadsheet

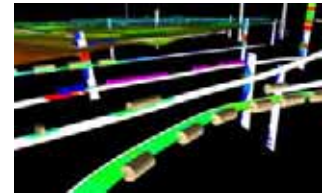
datatypes. Database schemas are rigidly defined, forcing the user to spend significant amounts of time massaging data in preparation for database loading.

This reality often results in the exclusion of important data due to a lack of time.

Solution: Recon's Free Form Interval Database

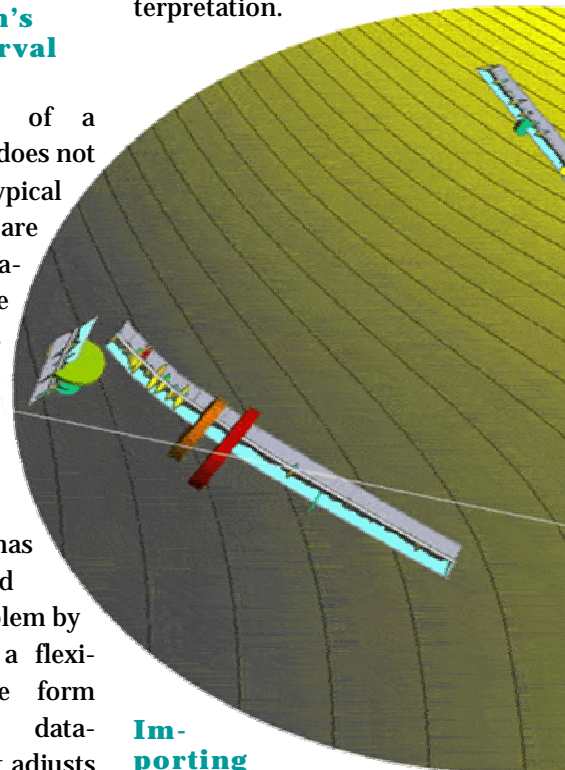
A good example of a datatype that often does not get included in a typical database project are geological interpretation intervals. These may include facies descriptions, core interpretations, or stratigraphic zonations.

Recon has addressed this problem by offering a flexible, free form interval database that adjusts to the data instead of forcing the user to conform to a predefined data structure. This enables the interpreter to quickly and easily integrate contextual interval data from a wide range of sources. The higher the variety of data that is made available in Recon's 3-D interpretation environment, the higher the



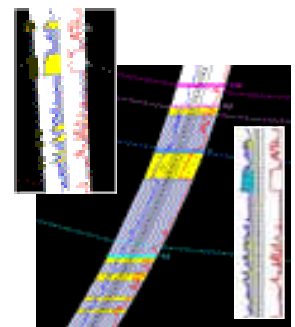
Completion and injection interval data with horizontal wells showing gamma ray

quality of the resulting interpretation.



Importing Intervals

Recon can import existing

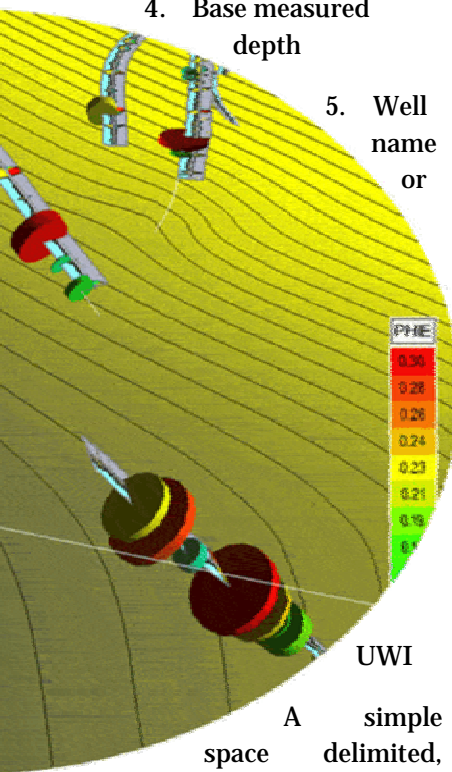


Intervals can be filled using standard lithology patterns

“Recon offers a flexible, free form interval database that adjusts to the data instead of forcing the user to conform to a predefined data structure.”

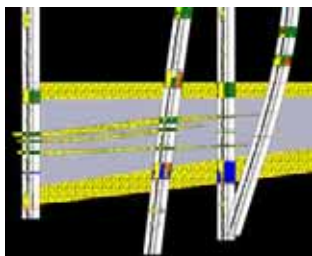
interval data using an easy to use import wizard. The minimum data required to define any interval is:

1. Class name (e.g. Facies or Production)
2. Type name (e.g. *grainstone* or *perf*)
3. Top measured depth
4. Base measured depth
5. Well name or



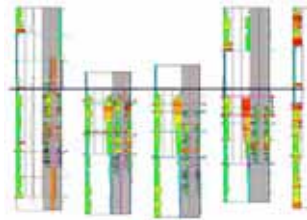
A simple space delimited, column-based text file containing interval data can be imported using the wizard.

Recon will automatically construct a spreadsheet with multiple sheets representing the various classes containing the



Recon cross-section showing production and injection rate interval colored by type

interval types. After importing the intervals, you can create, combine, or delete



Core description data and facies interpretations imported as intervals in Recon

classes and types and assign colors and fill patterns for the individual interval types. Optional interval attributes include start and stop time, value, and text remarks.

Defining Intervals in Recon

Intervals can be defined and edited directly on the wells displayed in the 2-D correlation window. Simply click and drag to define an interval for both straight and deviated wells.

You can drag-and-drop defined intervals between wells to speed up interactive interval interpretation workflow.

Displaying and Editing Intervals in 3-D

You can select and edit intervals directly in 3-D. After selecting an interval you can

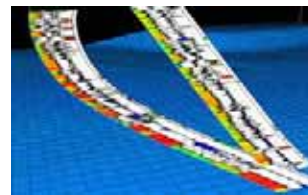
change the class, type, interval depth or values.

Filtering Intervals in Time

All intervals can be time-stamped using start and stop dates. You can perform such queries as “show all injection intervals with volumes greater than 500 b/d from 2001 through 2004” and see the results displayed in 3-D.

Intervals in Templates

All intervals can be referenced in well log templates. You can combine the interval data with log curves to highlight facies changes or completion intervals.

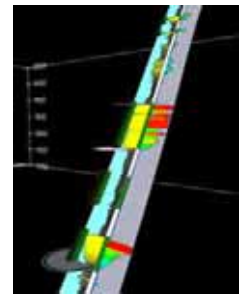


3-D Well log templates showing production intervals

You can fill a log curve with an interval class, which will automatically pick up all types with their color and pattern fill parameters. Depth-referenced text comments can be placed in templates using the interval remark fields.

Interval Calculations

Intervals can be calculated and used in equations in the Recon log calculator.



Defining perforation intervals in 3-D

AGM Houston
10200 Richmond, Ste. 251
Houston, Texas 77042

Phone: (713) 952-4141
Fax: (713) 952-4153
sales@austingeo.com

AGM Austin
10713 FM 620, Ste. E-522
Austin, Texas 78726

Phone: (512) 257-8820

Founded in 1996, AGM has been helping high tech oil & gas companies implement next-generation geological interpretation solutions. Customers depend on AGM to provide powerful, easy-to-use software that directly contributes to their business bottom line. AGM is proud to bring exciting new 3-D geological interpretation tools to your desktop.

For more information on AGM's innovative 3-D geological interpretation solutions, contact Bev Taylor at (713) 952-4141 or send him an email: btaylor@austingeo.com

AGM

*Ultimate 3-D Geological
Interpretation Solutions*



Recon on Linux extends platform deployment options to the next generation of mobile professional 3-D graphics solutions.

Visit AGM on the Web
www.austingeo.com

AGM LOOKS BACK AT A SUCCESSFUL AAPG IN DALLAS

With over 5,000 attendees, the AAPG concluded a successful 2004 exhibition in Dallas, Texas.

This AAPG was the best trade-show ever for AGM, both in terms of the numbers of visitors to our booth and their enthusiasm after seeing the latest version of Recon™.

Many attendees commented on Recon's unique collection of useful functionality in a single, intuitive, easy-to-use tool. They recognized that the speed and integration of Recon would translate into significant time-savings in their daily work.

Visitors already familiar with Recon were impressed with AGM's continued high rate of innovation, commenting that Recon continues to outpace the competition.

AGM demonstrated Recon in its dual-screen theater booth on two main workstations:

- SUN Blade2500, running 64-bit Solaris Unix.
- IBM A Pro IntelliStation, running 64-bit Red Hat Linux

