

# RECON NEWSLETTER

Volume 2, Issue 3

April 6, 2004



## AGM ANNOUNCES RECON RELEASE ON SUN MICROSYSTEMS 64-BIT SUN BLADE™ 2500 WORKSTATION

### Special points of interest:

- [Recon on Sun Blade2500](#)
- [Knowledge Management Cross-Sections](#)
- [AGM announces major transactions in China market](#)

AGM announced today the release of its flagship Recon™ product on Sun Microsystems' Sun Blade™2500, Sun's 64-bit, dual-processor capable workstation, designed and built to visualize and solve complex geoscience problems. Using its 100 percent binary compatible Solaris™ 8 Operating System, Recon users will be able to migrate seamlessly to the Sun Blade 2500 system from previous generation Sun workstations including the Sun Ultra™ 80, Sun Blade 1000 and Sun Blade 2000 workstations.



Sun Blade2500 64-bit Solaris Workstation

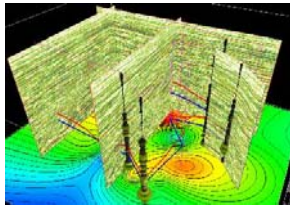
"The combination of the Sun Blade 2500 workstation's latest UltraSPARC™ IIIi processors, up to 8GB of DDR memory and dual Sun XVR-1200 Graphics Accelerators has created an ideal desktop platform for Recon's advanced 3-D geological interpretation solutions," said Robin Dommissie, AGM's CEO. "Sun Blade workstations have long provided an ideal 64-bit environment capable of handling the increasingly more complex datasets managed by Recon."

"Sun is thrilled that AGM is using our highest-performing Sun Blade 2500 workstation to run its state-of-the-art Recon geological interpretation and visualization solution," said Nick Weston, global manager, Oil and Gas Industries, Sun Microsystems. "The powerful combination of Sun's powerful 64-bit workstation and AGM's industry-first integrated 3-D technology offers a best-of-breed solution for the oil and gas industry."

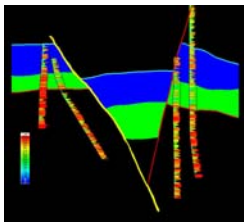
AGM and SUN are demonstrating the Sun Blade 2500 workstation running Recon version at the annual meeting of the American Association of Petroleum Geologists (AAPG), April 18-21 in Dallas, Texas.

### Inside this issue:

<a href="#">Knowledge Management Cross-Sections</a>	2-3
<a href="#">AGM announces major transactions in China market</a>	4



**3-D well-to-well and fence diagram cross-sections in Recon**



**Fault profile editing in Recon 2-D Correlation view**

*“With the click of a button you are able to switch between Recon’s four cross-section scaling modes ranging from deviated well projections to true stratigraphic thickness.”*

## Knowledge Management Cross-Sections

### Problem Statement

Creating presentation quality hardcopy cross-sections in traditional 2-D geological interpretation tools is a time-consuming task. Any changes to a finished cross-section require you to start all over again.

### Interpretation-based Hardcopy

Recon’s solution to this problem is to integrate the interpretation and hardcopy workflows using a single interface.

Unlike competing geological interpretation tools, Recon does not require you to run different modules to perform tasks such as correlation or hardcopy annotation.

Recon’s 2-D correlation window was designed to make it possible for you to continue your interpretation while preparing professional quality cross-section displays for management presentations.

With the click of a button

you are able to switch between Recon’s four cross-section scaling modes ranging from deviated well projections to true stratigraphic thickness.

This ability significantly streamlines your interpretation workflow, enabling you to effortlessly switch between stratigraphic and structural views of the cross-section.

By combining the 2-D correlation view with Recon’s 3-D interpretation workflow you will be able to define your stratigraphic framework quicker than ever before.

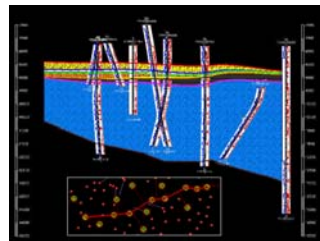
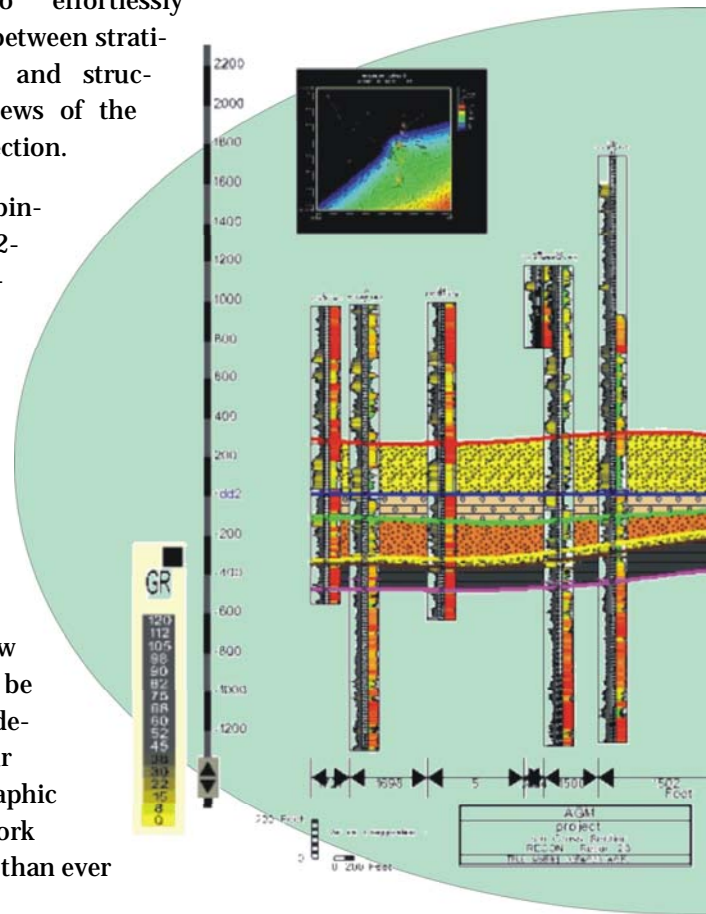
### Live Cross-Sections in Recon

Adding new data to Recon automatically updates the cross-section without forcing you to manually regenerate the display.

To add a well to a cross-

section you simply select it in the basemap and it will be automatically projected into the cross-section.

You can also change the line of section dynamically by dragging and dropping the cross-section nodes in the basemap; Recon will



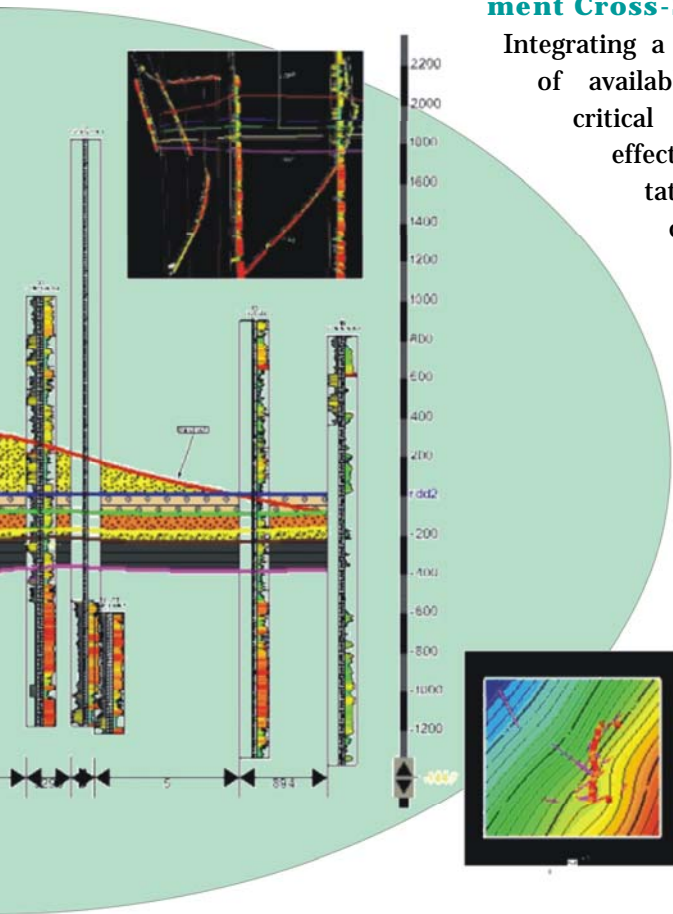
**Cross-section showing projected wells into the line of section**

update the projected wells in the cross-section view in real time.

Generating updated hardcopy is as simple as clicking the print button.

**The Advantage of 3-D**

Unlike our competitors, Recon is a truly 3-D solution, which has the advantage of enabling you to display true 3-D projected cross-section profiles that match the shape of the structural and stratigraphic surfaces mapped in 3-D.



You will save significant amounts of time during correlation by being able to see the projected intersections of the 3-D surface with wells which you have not interpreted yet, thus giving you a first-order approximation of the

actual pick location.

Using Recon's 3-D surface modeling solutions you are even able to datum wells for which you do not have a datum-pick. You can make interwell picks and define fault profiles between wells.

**Knowledge Management Cross-Sections**

Integrating a wide range of available data is critical to making effective presentation quality cross-sections.

Recon makes it easy to combine seismic, well log, and production data into a single, comprehensive cross-section display.

You can quickly define and display the following data types in Recon's cross-section displays"

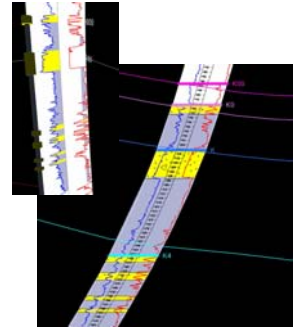
- Well log templates
- Seismic backdrops
- Production interval

data (e.g. time-stamped production volumes, perforation intervals)

- Hyperlinks to external documents and viewers (e.g. Acrobat PDF documents, Web pages)
- Annotations (e.g. text, arrows, lines, polygons)
- Imported images (e.g. core descriptions, 3-D display images, satellite images)
- Live index map showing contents of basemap
- Basemap and 3-D cursor tracking

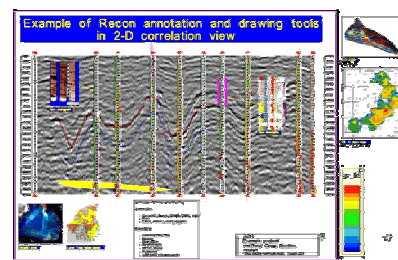
**Easy yet Powerful Hardcopy Solutions**

Integrating these data types into a dynamic, interpretation-based compositing environment will help you in saving time when it comes to generating professional quality hardcopy cross-section displays.



You can define facies or lithology intervals directly on deviated wells in the cross-section.

*“Recon’s cross-sections stay live, making it easy to add new data or to change your interpretation while generating presentation quality hardcopy.”*



Seismic backdrop shown in Recon cross-section view. Data can be directly accessed from Landmark SeisWorks projects.

**AGM Houston**  
10200 Richmond, Ste. 251  
Houston, Texas 77042

Phone: (713) 952-4141  
Fax: (713) 952-4153  
[sales@austingeo.com](mailto:sales@austingeo.com)

**AGM Austin**  
10713 FM 620, Ste. E-522  
Austin, Texas 78726

Phone: (512) 257-8820

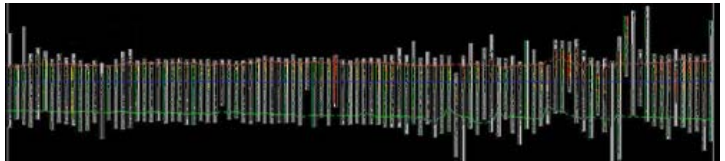
**AGM**

*Ultimate 3-D Geological  
Interpretation Solutions*

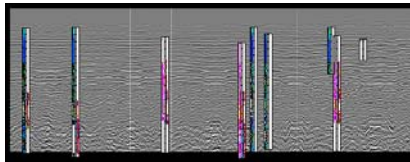
Visit AGM on the Web  
[www.austingeo.com](http://www.austingeo.com)

*Founded in 1996, AGM has been helping high tech oil & gas companies implement next-generation geological interpretation solutions. Customers depend on AGM to provide powerful, easy-to-use software that directly contributes to their business bottom line. AGM is proud to bring exciting new 3-D geological interpretation tools to your desktop.*

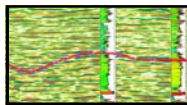
*For more information on AGM's innovative 3-D geological interpretation solutions, contact Bev Taylor at (713) 952-4141 or send him an email: [btaylor@austingeo.com](mailto:btaylor@austingeo.com)*



**Recon's scalable architecture allows an unlimited number of wells to be interpreted in its cross-section view.**



**40 mile long regional cross-section showing 3-D seismic backdrop in Recon.**



**One of Recon's unique features is its ability to automatically re-date a seismic cross-section after you drag & drop interwell picks.**

## **AGM ANNOUNCES MAJOR TRANSACTIONS IN CHINA MARKET**

AGM has announced that it has recently concluded major sales of its Recon™ software to a number of exploration and production companies in China, including PetroChina, a leading company in China responsible for producing two-thirds of China's oil and gas. Recon is currently providing 3-D geological interpretation solutions for 5 different oil fields in China.

Dr. Renqi Jiang, President of GCC, and reseller representative for AGM's geological interpretation products, stated. "These deals represent a major breakthrough for Recon in China, confirming

that Recon's superior technical solutions are ideally suited to solve the complex geological problems faced by our clients."

"Through the outstanding efforts of Dr. Jiang and his expert team of geoscience professionals in Beijing, Recon has been successfully introduced to the Chinese market, enabling our new clients to take advantage of the latest advancements in integrated 3-D geological interpretation," said Robin Domisse, AGM's CEO.

Visit GCC's website at:  
[www.gccgroupcorp.com](http://www.gccgroupcorp.com)

